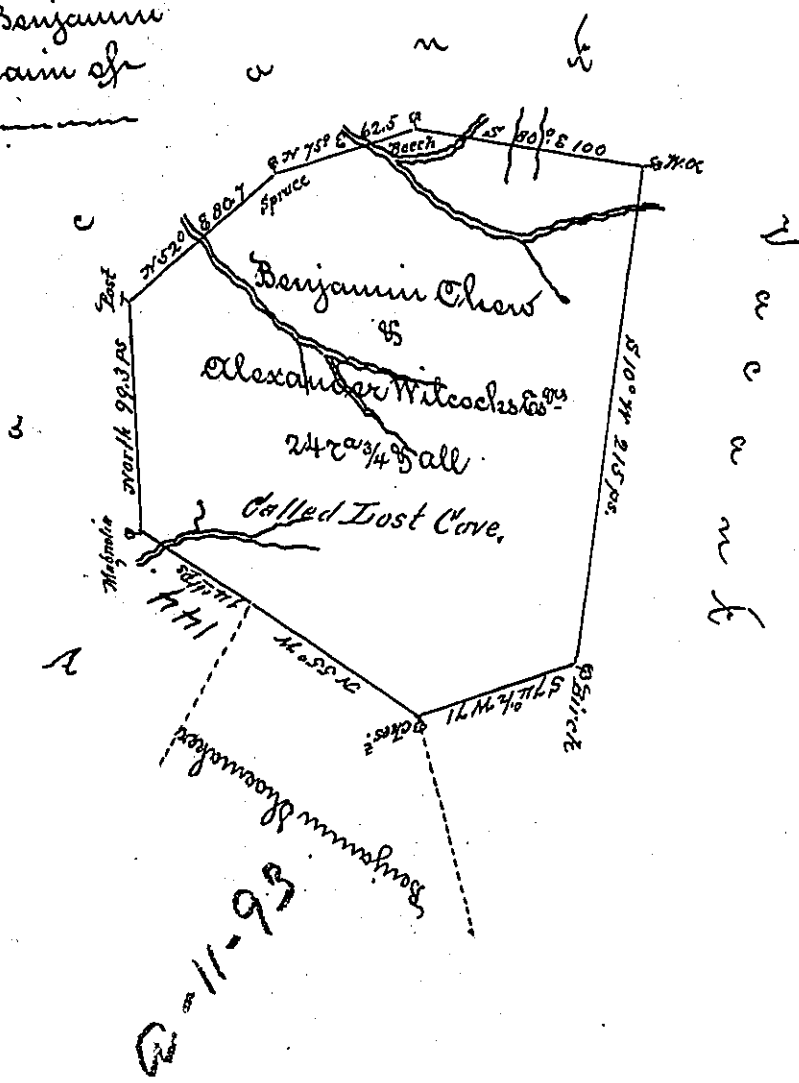


The land taken by Benjamin Shoemaker was the claim of Frederick Ambrosie.



Situated on a Branch of Castleman's River in ^{the} Eagle Mountain in Turkey Foot Township Bedford County and Survey'd the 25th day of July 1776, in pursuance of a Warrant ~~dated~~ dated the 1st day of October 1774
 John Carkner Esq^r Surveyor General. P. Alexander McClean Deput

IN TESTIMONY that the above is a copy of the original remaining on file in the Department of Internal Affairs of Pennsylvania, made conformably to an Act of Assembly approved the 16th day of February, 1833, I have hereunto set my Hand and caused the Seal of said Department to be affixed at Harrisburg, this fourth day of October 1898.

James W. Fatta
 Secretary of Internal Affairs.